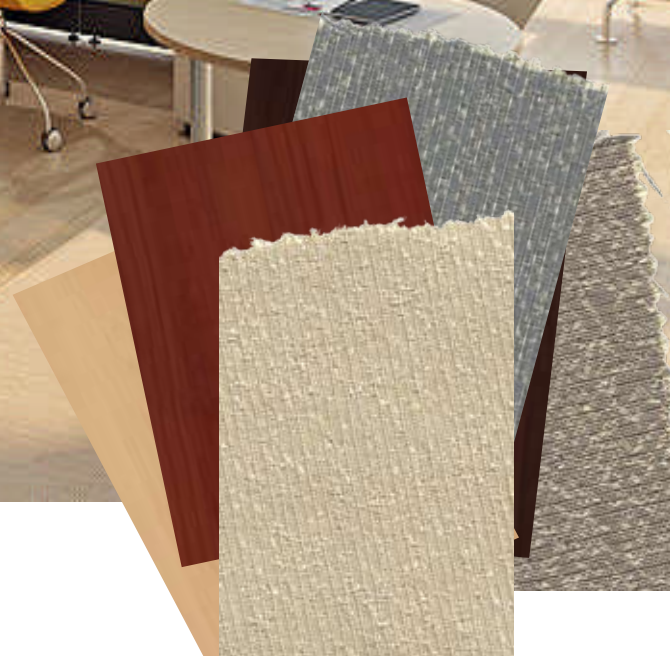


**Cubelinc, Inc.**  
Affordable Solutions For Today's Office Environments

# QUICKSHIP

5 and 10 Day  
Finishes/Fabrics

for System 2



Office: 678.508.8010 fax: 404.467.0501

[www.cubelinc.com](http://www.cubelinc.com)

# SLIDE

5  
DAY



5 **PF101-1** CARAMEL



5 **PF101-2** SLATE



5 **PF101-3** PEWTER



5 **PF101-4** VERDE



5 **PF101-5** TWILIGHT



5 **PF101-6** VINTAGE



5 **PF101-7** JAVA



5 **PF101-8** LATTE

QUICKSHIP

5 = 5 DAY ITEMS

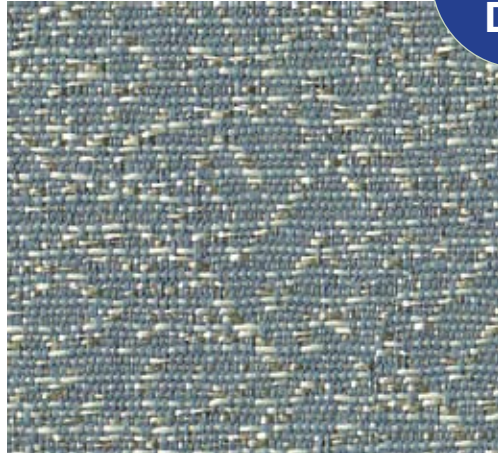
10 = 10 DAY ITEMS

# SILKY

10  
DAY



**10** PF401-1 NATURAL



**10** PF401-2 PARIDS



**10** PF401-3 OVERCAST



**10** PF401-4 FIELD



**10** PF401-5 GRAPHITE

QUICKSHIP

**5** = 5 DAY ITEMS

**10** = 10 DAY ITEMS

# STICKS

10  
DAY



10 **PF501-1** SMOKE



10 **PF501-2** ALMOND



10 **PF501-3** SAGE



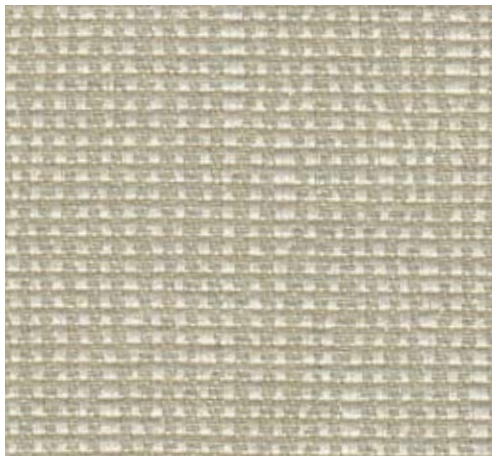
10 **PF501-4** STRAW

# SKY

10  
DAY



10 **PF301-1** TERRA

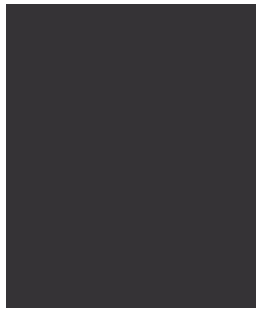


10 **PF301-2** BIRCH

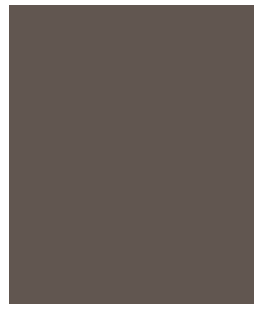


10 **PF301-3** MOSS

# WORKSURFACE EDGE FINISHES



**DT** DARK TONE



**MT** MEDIUM TONE

**5** = PVC Edge Trim/DT Only

**10** = PVC Edge Trim/DT&MT

## WORKSURFACES



FUSION MAPLE



WILD CHERRY



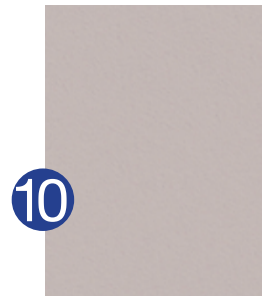
BILTMORE  
CHERRY



FIGURED MAHOG



ANTIQUE WHITE



FEATHERSTONE

### End Panels Only:



BLACK



SLATE GRAY

## PAINT



**LG** LIGHT GRAY



**MT** MEDIUM TONE



**DT** DARK TONE

# FABRIC SPECIFICATIONS

Pattern	Content	Weight	Width	Flammability
<b>SLIDE</b>				
Caramel <b>PF101-1</b>	100% Recycled Polyester	9.17 ± .35 oz/yd	66"	ASTM E-84, Class A or 1
Slate <b>PF101-2</b>				
Pewter <b>PF101-3</b>				
Verde <b>PF101-4</b>				
Twilight <b>PF101-5</b>				
Vintage <b>PF101-6</b>				
Java <b>PF101-7</b>				
Latte <b>PF101-8</b>				
<i>ALL FABRICS CONTAIN THE ABOVE SPECIFICATIONS.</i>				
<b>SILKY</b>				
Natural <b>PF401-1</b>				
Parids <b>PF401-2</b>				
Overcast <b>PF401-3</b>				
Field <b>PF101-4</b>				
Graphite <b>PF401-5</b>				
<b>STICKS</b>				
Smoke <b>PF501-1</b>				
Almond <b>PF501-2</b>				
Sage <b>PF501-3</b>				
Straw <b>PF501-4</b>				
<b>SKY</b>				
Terra <b>PF301-1</b>				
Birch <b>PF301-2</b>				
Moss <b>PF301-3</b>				

**NOTE:** Color may vary slightly between dye lots. Application testing of these products is recommended.